

highest
customized
QUALITY
state
PRECISION

ACCESSORI

ACCESSORIES - ACCESSOIRES - ACCESORIOS



VALVOLE
 UNLOADER VALVES
 REGULATEURS
 REGULADORES



TUBI FLESSIBILI
 HOSES
 TUYAUX FLEXIBLES
 MANGUERAS FLEXIBLES



RIDOTTORI
 GEARBOXES
 REDUCTEURS
 REDUCTORES



ATTACCHI
 CONNECTIONS
 ATTELAGES
 CONEXIONES



PULEGGE
 PULLEYS
 POULIES
 POLEAS



EIETTORI
 INJECTORS
 ÉJECTEURS
 EYECTORES



GIUNTI
 COUPLINGS
 ACCOUPLEMENTS
 ACOPLAMIENTOS



ACCESSORI VARI
 SUNDRY ACCESSORIES
 ACCESSOIRES DIFFERENTS
 ACCESORIOS VARIOS



PISTOLE
 GUNS
 PISTOLETS
 PISTOLAS



UGELLI
 NOZZLES
 BUSES
 BOQUILLAS



LANCE
 LANCES
 LANCES
 LANZAS

VALVOLE UNLOADER VALVES - REGULATEURS - REGULADORES

NEW

VALVOLE CON DISPOSITIVO ENERGY SAVING / UNLOADER VALVES WITH ENERGY SAVING DEVICE / REGULATEURS DE PRESSION BY-PASS AVEC DISPOSITIF ENERGY SAVING / REGULADORES CON DISPOSITIVO DE AHORRO ENERGIA



Il nuovo dispositivo ENERGY SAVING by-passa l'ugello eiettore in alta pressione eliminando le perdite di carico e aumentando la potenza disponibile alla lancia

The new ENERGY SAVING device has been specifically designed to bypass the injector nozzle in high pressure, thus eliminating the losses of load and increasing the power available to the lance

Le nouveau dispositif ENERGY SAVING (économie d'énergie) dévie la buse d'éjecteur en haute pression, ce qui évite les pertes de charge et augmente la puissance disponible à la lance.

El nuevo dispositivo ENERGY SAVING desvía la boquilla del eyector en alta presión, eliminando las pérdidas de carga y aumentando la potencia disponible a la lanza.

Valvole regolazione pressione APR: attacco con viti cave
Unloader valves APR with banjo connections
Régulateurs de pression by-pass APR avec vis de fixation
Válvulas de regulación de presión APR: conexión con tornillos de fijación

Temperatura max: 60°C - 140°F
Max temperature: 60°C - 140°F
Température maxi: 60°C - 140°F
Temperatura máx: 60°C - 140°F

APR 20 APR.I 20 APR. ES 20 APR 25-30 APR.I 25-30 APR. ES 25-30



	CODICE PART NR.	USCITA OUTLET	MODELLO MODEL	PRESSIONE MAX MAX PRESSURE		Inj. Dia.	PORTATA FLOW		Attacco pompa Port size	Entrata Inlet	PESO WEIGHT		SERIE SERIES			
				BAR	PSI		l/min	GPM			BSP	BSP		Kg	lbs	
APR - APR.I 20 ORANGE COLOR	05.8708.97.3	3/8 BSP-M	APR 20	140	2000	/	21	5.5	3/8	3/8	1/2 - M	0.86	1.9	WB-WBX		
	05.8711.97.3	22x1.5-M										0.90	2.0			
	05.8707.97..	3/8 BSP-M	APR.I 20 Fixed injector	140	2000	16	9.5	2.5	3/8	3/8	1/2 - M	0.90	2.0			
	05.8710.97..	22x1.5-M				18	11	2.9				0.95	2.1			
	05.8706.97..	3/8 BSP-M				21	15	4.0				0.90	2.0			
	05.8709.97..	22x1.5-M				23	21	5.5				0.95	2.1			
	APR - APR.I 25 BLUE COLOR	05.8714.97.3	3/8 BSP-M	APR 25	175	2500	/	21	5.5	3/8	3/8	1/2 - M	0.86		1.9	WB-WBX
		05.8717.97.3	22x1.5-M										0.90		2.0	
		05.8713.97..	3/8 BSP-M	APR.I 25 Fixed injector	175	2500	16	9.5	2.5	3/8	3/8	1/2 - M	0.90		2.0	
		05.8716.97..	22x1.5-M				18	11	2.9				0.95		2.1	
		05.8712.97..	3/8 BSP-M				21	15	4.0				0.90		2.0	
		05.8715.97..	22x1.5-M				23	21	5.5				0.95		2.1	
APR - APR.I 25 BLUE COLOR		05.8715.97..	22x1.5-M	APR.I 25 Adjust. injector	175	2500	16	9.5	2.5	3/8	3/8	1/2 - M	0.90	2.0	WB-WBX	
							18	11	2.9				0.90	2.0		
							21	15	4.0				0.95	2.1		
							23	21	5.5				0.95	2.1		
							ES	11	2.9				0.95	2.1		

.. Aggiungere al codice - Add to the last number - Ajouter à la réf. - Añadir a la ref.:

16: valvola con ugello eiettore dia. 1.6mm- valve with injector nozzle dia. 1.6mm - régulateur avec buse d'éjecteur dia. 1.6mm - regulador con boquilla eyector dia. 1.6mm
18: valvola con ugello eiettore dia. 1.8mm- valve with injector nozzle dia. 1.8mm - régulateur avec buse d'éjecteur dia. 1.8mm - regulador con boquilla eyector dia. 1.8mm
21: valvola con ugello eiettore dia. 2.1mm- valve with injector nozzle dia. 2.1mm - régulateur avec buse d'éjecteur dia. 2.1mm - regulador con boquilla eyector dia. 2.1mm
23: valvola con ugello eiettore dia. 2.3mm- valve with injector nozzle dia. 2.3mm - régulateur avec buse d'éjecteur dia. 2.3mm - regulador con boquilla eyector dia. 2.3mm
ES: valvola con dispositivo Energy Saving - valve with Energy Saving Device - régulateur avec dispositif Energy Saving - regulador con dispositivo Ahorro Energia

APR - APR.I 30 BLUE COLOR	CODICE PART NR.	USCITA OUTLET	MODELLO MODEL	PRESSIONE MAX MAX PRESSURE		Inj. Dia.	PORTATA FLOW		Attacco pompa Port size	Entrata Inlet	PESO WEIGHT		SERIE SERIES	
				BAR	PSI		l/min	GPM	BSP	BSP	Kg	lbs		
	05.8720.97.3	3/8 BSP-M	APR 30	210	3000	/	21	5.5	3/8	1/2 - M	0.86	1.9	WM - TM	
	05.8723.97.3	22x1.5-M							1/2		0.90	2.0		
	05.8719.97..	3/8 BSP-M	APR.I 30 Fixed injector	210	3000	16	9.5	2.5	3/8	1/2 - M	0.90	2.0		
	05.8722.97..	22x1.5-M				18	11	2.9			1/2	0.95		2.1
						21	15	4.0						
						23	21	5.5						
	05.8718.97..	3/8 BSP-M	APR.I 30 Adjust.injector	210	3000	16	9.5	2.5	3/8	1/2 - M	0.90	2.0		
	05.8721.97..	22x1.5-M				18	11	2.9			1/2	0.95		2.1
						21	15	4.0						
						23	21	5.5						
						ES	11	2.9						

APR 35-40 APR.I 35-40



APR - APR.I 35 GREEN COLOR	CODICE PART NR.	USCITA OUTLET	MODELLO MODEL	PRESSIONE MAX MAX PRESSURE		Inj. Dia.	PORTATA FLOW		Attacco pompa Port size	Entrata Inlet	PESO WEIGHT		SERIE SERIES	
				BAR	PSI		l/min	GPM	BSP	BSP	Kg	lbs		
	05.8751.97.3	3/8 BSP- M	APR 35	240	3500	/	21	5.5	3/8	1/2 - M	1.10	2.4	WBX	
	05.8754.97.3	22x1.5-M							3/8		1.15	2.5		
	05.8752.97..	3/8 BSP-M	APR.I 35 Fixed injector	240	3500	16	9.5	2.5	3/8	1/2 - M	1.15	2.5		
	05.8755.97..	22x1.5-M				18	11	2.9			3/8	1.20		2.65
						21	15	4.0						
						23	21	5.5						
	05.8753.97..	3/8 BSP-M	APR.I 35 Adjust. injector	240	3500	16	9.5	2.5	3/8	1/2 - M	1.15	2.5		
	05.8759.97..	22x1.5- M				18	11	2.9			3/8	1.20		2.65
						21	15	4.0						
						23	21	5.5						

APR - APR.I 40 GREEN COLOR	CODICE PART NR.	USCITA OUTLET	MODELLO MODEL	PRESSIONE MAX MAX PRESSURE		Inj. Dia.	PORTATA FLOW		Attacco pompa Port size	Entrata Inlet	PESO WEIGHT		SERIE SERIES	
				BAR	PSI		l/min	GPM	BSP	BSP	Kg	lbs		
	05.8702.97.3	3/8 BSP-M	APR 40	280	4000	/	21	5.5	3/8	1/2 - M	1.10	2.4	WM - TM	
	05.8705.97.3	22x1.5-M							1/2		1.15	2.5		
	05.8701.97..	3/8 BSP-M	APR.I 40 Fixed injector	280	4000	16	9.5	2.5	3/8	1/2 - M	1.15	2.5		
	05.8704.97..	22x1.5-M				18	11	2.9			1/2	1.20		2.65
						21	15	4.0						
						23	21	5.5						
	05.8700.97..	3/8 BSP-M	APR.I 40 Adjust. injector	280	4000	16	9.5	2.5	3/8	1/2 - M	1.15	2.5		
	05.8703.97..	22x1.5-M				18	11	2.9			1/2	1.20		2.65
						21	15	4.0						
						23	21	5.5						

.. Aggiungere al codice - Add to the last number - Ajouter à la réf. - Añadir a la ref. :

16: valvola con ugello eiettore dia. 1.6mm- valve with injector nozzle dia. 1.6mm - régulateur avec buse d'éjecteur dia. 1.6mm - regulador con boquilla eyector dia. 1.6mm
 18: valvola con ugello eiettore dia. 1.8mm- valve with injector nozzle d. 1.8mm - régulateur avec buse d'éjecteur dia. 1.8mm - regulador con boquilla eyector dia. 1.8mm
 21: valvola con ugello eiettore dia. 2.1mm- valve with injector nozzle dia. 2.1mm - régulateur avec buse d'éjecteur dia. 2.1mm - regulador con boquilla eyector dia. 2.1mm
 23: valvola con ugello eiettore d. 2.3mm- valve with injector nozzle d. 2.3mm - régulateur avec buse d'éjection d. 2.3mm - regulador con boquilla eyector d. 2.3mm
 ES: valvola con dispositivo Energy Saving - valve with Energy Saving Device - régulateur avec dispositif Energy Saving - regulador con dispositivo Ahorro Energia

state customized **PRECISION** **VALVOLE** **THE ART** **highest QUALITY** **state OF THE ART** **highest QUALITY** **state OF THE ART** **customized PRECISION**

UNLOADER VALVES - REGULATEURS - REGULADORES

Valvole regolazione pressione UNIFIT con by-pass esterno
 Unloader valves UNIFIT with external by-pass
 Régulateurs de Pression UNIFIT
 Válvulas de regulación de presión UNIFIT

Temperatura max: 60°C – 140°F
 Max temperature: 60°C – 140°F
 Température maxi: 60°C – 140°F
 Temperatura máx: 60°C – 140°F

UNIFIT 20 UNIFIT.I 20 UNIFIT. ES 20 UNIFIT 30 UNIFIT.I 30 UNIFIT. ES 30



UNIFIT - UNIFIT.I 20 ORANGE COLOR	CODICE PART NR.	USCITA OUTLET	MODELLO MODEL	PRESSIONE MAX MAX PRESSURE		Inj. Dia.	PORTATA FLOW		Attacco pompa Port size	Scarico By pass	PESO WEIGHT	
				BAR	PSI		l/min	GPM			BSP	BSP
	05.8730.97.3	3/8 BSP-M	UNIFIT 20	140	2000	/	30	8.0	3/8 - M	3/8 - M	0.6	1.3
05.8733.97.3	22x1.5-M	UNIFIT 20	140	2000	/	30	8.0	3/8 - M	3/8 - M	0.64	1.4	
05.8731.97..	3/8 BSP-M	UNIFIT.I 20 Fixed injector	140	2000	16	9.5	2.5	3/8 - M	3/8 - M	0.64	1.4	
05.8734.97..	22x1.5-M				18	11	2.9					
05.8732.97..	3/8 BSP-M				21	15	4.0					
05.8735.97..	22x1.5-M				23	21	5.5					
05.8732.97..	3/8 BSP-M	UNIFIT.I 20 Adjust. injector	140	2000	16	9.5	2.5	3/8 - M	3/8 - M	0.64	1.4	
05.8735.97..	22x1.5-M				18	11	2.9					
					21	15	4.0					
					23	21	5.5					
					ES	11	2.9			0.68	1.5	

UNIFIT - UNIFIT.I 30 BLUE COLOR	CODICE PART NR.	USCITA OUTLET	MODELLO MODEL	PRESSIONE MAX MAX PRESSURE		Inj. Dia.	PORTATA FLOW		Attacco pompa Port size	Scarico By pass	PESO WEIGHT	
				BAR	PSI		l/min	GPM			BSP	BSP
	05.8736.97.3	3/8 BSP-M	UNIFIT 30	210	3000	/	30	8.0	3/8 - M	3/8 - M	0.6	1.3
05.8739.97.3	22x1.5-M	UNIFIT 30	210	3000	/	30	8.0	3/8 - M	3/8 - M	0.64	1.4	
05.8737.97..	3/8 BSP-M	UNIFIT.I 30 Fixed injector	210	3000	16	9.5	2.5	3/8 - M	3/8 - M	0.64	1.4	
05.8740.97..	22x1.5-M				18	11	2.9					
					21	15	4.0					
					23	21	5.5					
05.8738.97..	3/8 BSP-M	UNIFIT.I 30 Adjust. injector	210	3000	16	9.5	2.5	3/8 - M	3/8 - M	0.64	1.4	
05.8741.97..	22x1.5-M				18	11	2.9					
					21	15	4.0					
					23	21	5.5					
					ES	11	2.9			0.68	1.5	

.. Aggiungere al codice - Add to the last number - Ajouter à la réf. - Añadir a la ref.:

16: valvola con ugello eiettore dia. 1.6mm- valve with injector nozzle dia. 1.6mm - régulateur avec buse d'éjecteur dia. 1.6mm - regulador con boquilla eyector dia. 1.6mm
 18: valvola con ugello eiettore dia. 1.8mm- valve with injector nozzle dia. 1.8mm - régulateur avec buse d'éjecteur dia. 1.8mm - regulador con boquilla eyector dia. 1.8mm
 21: valvola con ugello eiettore dia. 2.1mm- valve with injector nozzle dia. 2.1mm - régulateur avec buse d'éjecteur dia. 2.1mm - regulador con boquilla eyector dia. 2.1mm
 23: valvola con ugello eiettore d. 2.3mm- valve with injector nozzle d. 2.3mm - régulateur avec buse d'injection d. 2.3mm - regulador con boquilla eyector d. 2.3mm
 ES: valvola con dispositivo Energy Saving - valve with Energy Saving Device - régulateur avec dispositif Energy Saving - regulador con dispositivo Ahorro Energia

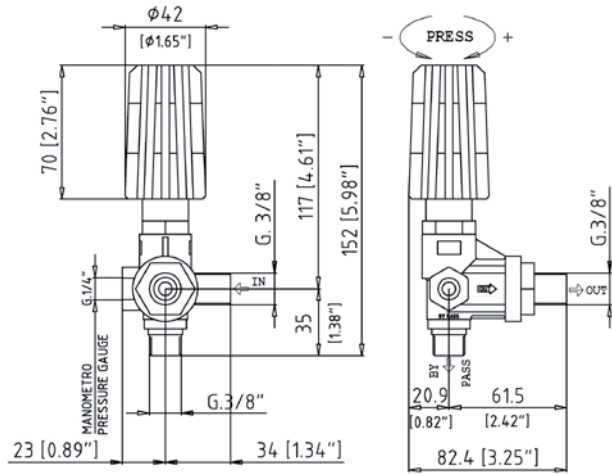
Valvole regolazione pressione con by-pass esterno
 Unloader valves with external by-pass
 Régulateurs de pression séparés de la culasse
 Válvulas de regulación de presión

Temperatura max: 60°C - 140°F
 Max temperature: 60°C - 140°F
 Température maxi: 60°C - 140°F
 Temperatura máx: 60°C - 140°F

VD 140
VD 200
VD 280



CODICE PART NR.	COLOR	MODELLO MODEL	PRESSIONE MAX MAX PRESSURE		PORTATA FLOW		Attacco pompa Port size	Uscita Outlet	Scarico By-pass	PESO WEIGHT	
			BAR	PSI	l/min	GPM				Kg	lbs
05.9899.97.3	Green	VD 140	140	2000	30	8.0	3/8 BSP - M	3/8 BSP - M	3/8 BSP - M	0.73	1.6
05.9903.97.3	Green	VD 200	210	3000	30	8.0	3/8 BSP - M	3/8 BSP - M	3/8 BSP - M	0.73	1.6
05.9955.97.3	Green	VD 280	280	4000	30	8.0	3/8 BSP - M	3/8 BSP - M	3/8 BSP - M	0.73	1.6

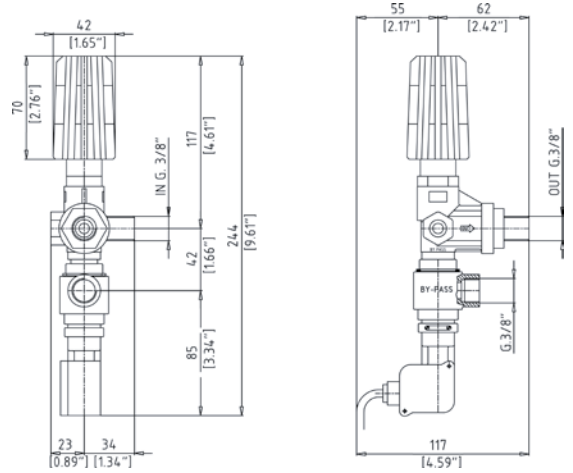
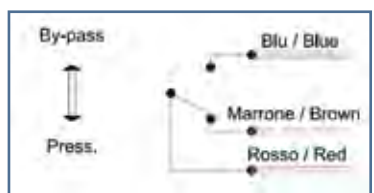


VD
CON MICROINTERRUTTORE
WITH MICRO-SWITCH



CODICE PART NR.	COLOR	MODELLO MODEL	PRESSIONE MAX MAX PRESSURE		PORTATA FLOW		Attacco pompa Port size	Uscita Outlet	Scarico By-pass	PESO WEIGHT	
			BAR	PSI	l/min	GPM				Kg	lbs
05.8762.97.3	Green	VD 140 MICRO-SWITCH	140	2000	30	8.0	3/8 BSP - M	3/8 BSP - M	3/8 BSP - F	0.95	2.1
05.8763.97.3	Green	VD 200 MICRO-SWITCH	210	3000	30	8.0	3/8 BSP - M	3/8 BSP - M	3/8 BSP - F	0.95	2.1
05.8764.97.3	Green	VD 280 MICRO-SWITCH	280	4000	30	8.0	3/8 BSP - M	3/8 BSP - M	3/8 BSP - F	0.95	2.1






CORRENTE MAX: 2 A
 TENSIONE MAX: 250 V
 MAX CURR. STRENGTH: 2 A
 MAX VOLTAGE: 250 V



VALVOLE SICUREZZA

SAFETY VALVES - VALVES DE SECURITE - VÁLVULAS DE SEGURIDAD

Temperatura max: 90°C – 195°F
 Max temperature: 90°C – 195°F
 Température maxi: 90°C – 195°F
 Temperatura máx: 90°C – 195°F

CODICE PART NR.	MODELLO MODEL	PRESSIONE MAX MAX PRESSURE		PORTATA FLOW		Attacco pompa Port size	Scarico By-pass	PESO WEIGHT		
		BAR	PSI	l/min	GPM			Kg	lbs	
 86.1670.00.2	VS 250	250	3600	24	6.3	3/8 BSP - F	3/8 BSP - F	0.36	0.8	
	86.1675.00.2	VS 250-2 BY-PASS 1/4	250	3600	24	6.3	N°2 3/8 BSP - F	1/4 BSP - F	0.46	1.0
	86.1660.00.2	VS 250-2 BY-PASS 3/8	250	3600	24	6.3	N°2 3/8 BSP - F	3/8 BSP - F	0.46	1.0
 86.1676.00.2	VS 350	350	5100	24	6.3	N°2 3/8 BSP - F	3/8 BSP - F	0.46	1.0	
 86.1677.00.2	VS 280 (AISI 303)	280	4000	80	21	N°2 1/2 BSP - F	1/2 BSP - F	1.21	2.7	
	86.1678.00.2	VS 400 (AISI 303)	400	5800	80	21	N°2 1/2 BSP - F	1/2 BSP - F	1.21	2.7
 86.1679.00.2	VS 500	500	7250	80	21	1/2 BSP - F	1/2 BSP - F	1.42	3.1	

ACCIAIO INOX
STAINLESS STEEL

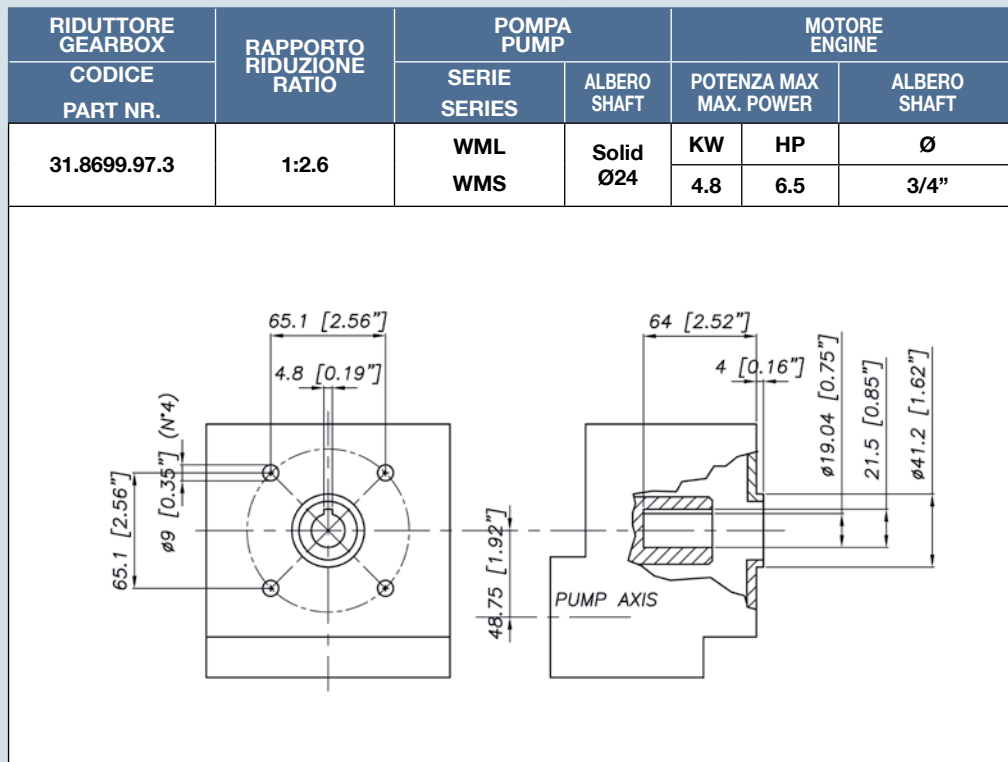
customized highest highest
 customized HISTORY QUALITY
 PRECISION

RIDUTTORI PER MOTORI TERMICI / GEARBOXES FOR GAS/DIESEL ENGINES RÉDUCTEURS POUR MOTEURS À ESSENCE/DIESEL REDUCTORES PARA MOTORES TÉRMICOS

Attenzione: per una corretta applicazione controllare la velocità di rotazione del motore e accertarsi che non venga superato il regime di rotazione massimo della pompa.
 Warning: for correct use check the rotation speed of the engine/motor and never exceed the max. RPM rate indicated on the pump label.
 Attention: afin de respecter les conditions d'utilisation correcte il faut contrôler la vitesse de rotation du moteur et s'assurer de ne travailler jamais à une vitesse de rotation supérieure au régime indiqué sur la plaquette de la pompe.
 Atención: Para una correcta aplicación, controlar la velocidad de rotación del motor y asegurarse de que no exceda la velocidad máxima indicada en la tarjeta de la bomba.

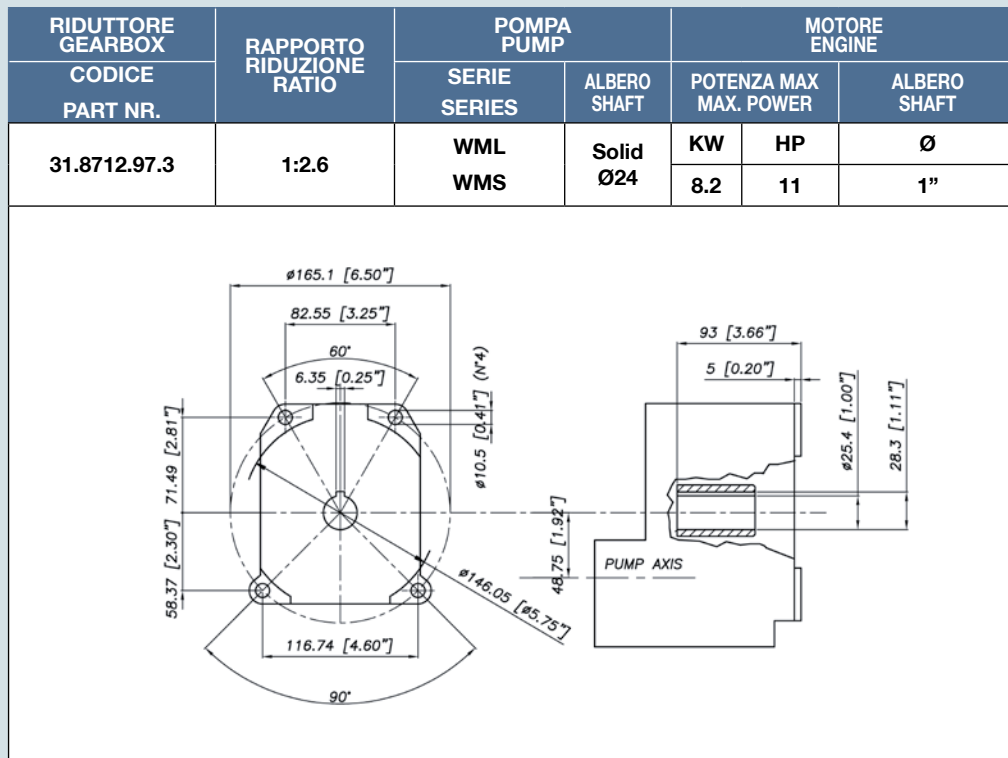
RTI 126 3/4"

M SAE J609 -3/4"



RTI 126 1"

M SAE J609 -1"



customized highest state
RIDUTTORI PER MOTORI TERMICI / GEARBOXES FOR GAS/DIESEL ENGINES ART
RÉDUCTEURS POUR MOTEURS À ESSENCE/DIESEL customized
REDUCTORES PARA MOTORES TÉRMICOS QUALITY PRECISION

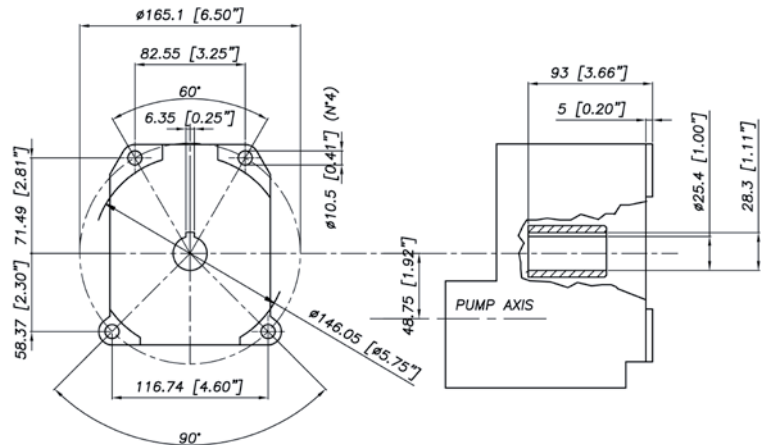
Attenzione: per una corretta applicazione controllare la velocità di rotazione del motore e accertarsi che non venga superato il regime di rotazione massimo della pompa.
 Warning: for correct use check the rotation speed of the engine/motor and never exceed the max. RPM rate indicated on the pump label.
 Attention: afin de respecter les conditions d'utilisation correcte il faut contrôler la vitesse de rotation du moteur et s'assurer de ne travailler jamais à une vitesse de rotation supérieure au régime indiqué sur la plaquette de la pompe.
 Atención: Para una correcta aplicación, controlar la velocidad de rotación del motor y asegurarse de que no exceda la velocidad máxima indicada en la tarjeta de la bomba.

RTI 118 1"

M SAE J609 -1"



RIDUTTORE GEARBOX CODICE PART NR.	RAPPORTO RIDUZIONE RATIO	POMPA PUMP		MOTORE ENGINE		
		SERIE SERIES	ALBERO SHAFT	POTENZA MAX MAX. POWER	ALBERO SHAFT	
31.8738.97.3	1:1.8	WML	Solid Ø24	KW	HP	Ø
		WMS		8.2	11	1"



RTI 121 1"

M SAE J609 -1"

RTI 121 1" 1/8

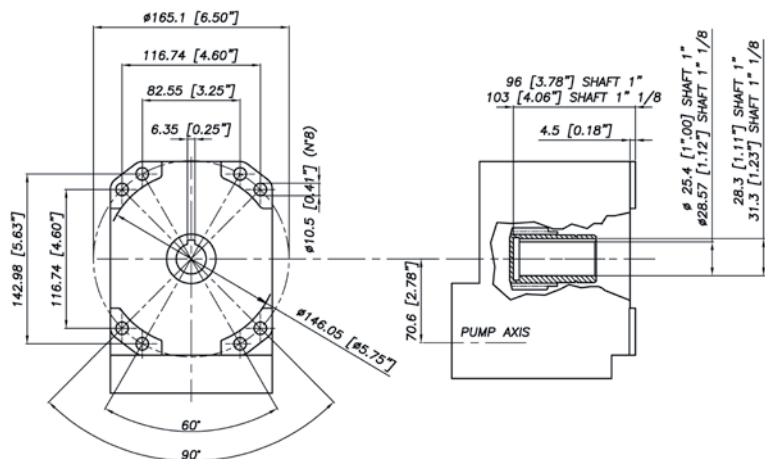
M SAE J609 -1" 1/8



RTI 123 DC 1" 1/8

M SAE J609 -1" 1/8

RIDUTTORE GEARBOX CODICE PART NR.	RAPPORTO RIDUZIONE RATIO	POMPA PUMP		MOTORE ENGINE		
		SERIE SERIES	ALBERO SHAFT	POTENZA MAX MAX. POWER	ALBERO SHAFT	
31.8871.97.3	1:2.1	WML	Solid Ø24	KW	HP	Ø
		WMS		13.4	18	1"
31.8870.97.3	1:2.1	TML TTL	Solid Ø24	13.4	18	1"
31.9110.97.3	1:2.1	TTK - KTL KKL	Solid Ø24	13.4	18	1"
31.9111.97.3	1:2.1	TTK - KTL KKL	Solid Ø24	14.9	20	1" 1/8
31.8855.97.3	1:2.1	RA - RB - RD	Solid Ø30	13.4	18	1"
31.8880.97.3	1:2.1	RA - RB - RD	Solid Ø30	14.9	20	1" 1/8
31.9219.97.3	1:2.3	RA - RB - RD	Solid Ø30	26	35	1" 1/8



PULEGGE / PULLEYS / POULIES / POLEAS



CODICE PART NR.	MODELLO MODEL	RA - RB - RD	WML TML		
			TTL	TTK	KTL KKL
31.8730.97.3	2A ØP 80				•
31.8731.97.3	2A ØP 90				•
38.9873.97.3	2A ØP 130				•
31.8733.97.3	3A ØP 130				•
31.8734.97.3	2A ØP 160				•
31.8735.97.3	3A ØP 160				•
31.8864.97.3	3B ØP 160	•			

**FLANGIATURA CON GIUNTO ELASTICO PER MOTORI ELETTRICI / BELL HOUSING
 + FLEXIBLE COUPLING FOR ELECTRIC MOTORS / BRIDES AVEC ACCOUPLEMENT
 ELASTIQUE POUR MOTEURS ELECTRIQUES / BRIDA CON JUNTA ELÁSTICA PARA
 MOTORES ELECTRICOS**



CODICE PART NR.	MOTORE ELETTRICO ELECTRIC MOTOR		POMPE PUMPS				
	ALBERO SHAFT	TIPO FRAME	WBL WBXL	WM	TML TTL	TTK KTL KKL	RA - RB RD
31.8929.97.3	28	B3/B14 - H100-112 (HP 4 ÷ 7.5)	•				
31.8930.97.3					•		
31.8949.97.3					•		
31.8986.97.3	1"1/8	NEMA 184TC	•	•			
31.8947.97.3	38	B3/B14 - H132 (HP 10÷15)			•		
31.9112.97.3						•	
31.8948.97.3							
31.9113.97.3	42	B3/B14 - H160 (HP 15÷30)				•	
31.8946.97.3							•

**FLANGIATURA CON GIUNTO RIGIDO / BELL HOUSING + RIGID COUPLING
 BRIDES AVEC ACCOUPLEMENT RIGIDE / BRIDA CON JUNTA RÍGIDA**



CODICE PART NR.	MOTORE ELETTRICO ELECTRIC MOTOR		POMPE PUMPS
	ALBERO SHAFT	TIPO FRAME	WBL - WBXL
31.8711.97.3	28	B3/B14 H100/112	•

FLANGIATURA CON GIUNTO ELASTICO PER MOTORI IDRAULICI
BELL HOUSING + FLEXIBLE COUPLING FOR HYDRAULIC MOTORS
BRIDES AVEC ACCOUPLEMENT ELASTIQUE POUR MOTEURS HYDRAULIQUES
BRIDA CON JUNTA ELÁSTICA PARA MOTORES HIDRÁULICOS



CODICE PART NR.	MOTORE IDRAULICO HYDRAULIC MOTOR			POMPE PUMPS			COPPIA MASSIMA MAX. TORQUE
	TIPO FRAME	ALBERO SHAFT	FLANGIA FLANGE	TTL	TTL TTK KTL KKL	RA RB RD	
31.9211.97.3	GRUPPO 2 GROUP 2	3/4" SAE A CILINDRICO SOLID SHAFT 3/4" SAE A	SAE A (CENTRAGGIO Ø82.55mm) 2 FORI (INTERASSE 106.2mm) SAE A (CENTERING Ø82.55mm) 2 HOLES (DISTANCE 106.2mm)	•			50Nm
31.9212.97.3	GRUPPO 3 GROUP 3	1" SAE BB CILINDRICO SOLID SHAFT 1" SAE BB	SAE B (CENTRAGGIO Ø101.6mm) 2 FORI (INTERASSE 146mm) SAE B (CENTERING Ø101.6mm) 2 HOLES (DISTANCE 146mm)		•		120Nm
31.9213.97.3						•	120Nm
31.9214.97.3						•	230Nm



GIUNTO SCANALATO / SPLINE COUPLING
ACCOUPLMENT CANNELE / JUNTA ESTRIADA



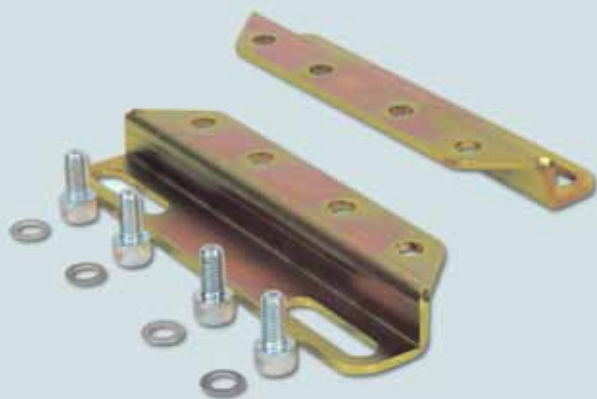
CODICE PART NR.			MOTORE ELETTRICO ELECTRIC MOTOR
	ALBERO POMPA PUMP SHAFT	SCANALATO SPLINE	RA - RB - RD
31.1648.00.2	30	1"3/8	•

KIT GIUNTO SCANALATO / SPLINE COUPLING KIT
KIT ACCOUPLEMENT CANNELE / KIT JUNTA ESTRIADA



CODICE PART NR.	ALBERO POMPA PUMP SHAFT	SCANALATO SPLINE	MODELLI POMPE: PUMPS MODELS:
31.8954.97.3	30	1"3/8	RA - RB - RD

KIT PIEDINI / MOUNTING RAILS KIT
KIT SUPPORTS / JUEGO PIES DE SOPORTE



CODICE PART NR.	POMPE PUMPS				
	WB WBX	WM	TTL TTK KTL KKL	TM	RA RB RD
02.9829.97.3	•				
04.9833.97.3		•			
05.9890.97.3			•		
07.9802.97.3				•	
08.9829.97.3					•

PISTOLE TIPO "A" - GUNS TYPE "A"
PISTOLETS TYPE "A" - PISTOLAS TIPO "A"

Senza prolunga
Without extension
Sans rallonge
Sin extensión



CODICE PART NR.	ENTRATA INLET	USCITA OUTLET	PRESSIONE MAX MAX PRESSURE		PORTATA FLOW	TEMP. MAX		SERIE POMPA PUMP SERIES	
			BAR	PSI		l/min	GPM		°C
84.5900.00.2	3/8BSP - F	1/4 BSP - F	200	2900	30	7,9	160	320	WB, WM, TM
84.5900.05.2	3/8 BSP - M	1/4 BSP - F	200	2900	30	7,9	160	320	
84.5900.06.2	22x1.5 - M	1/4 BSP - F	200	2900	30	7,9	160	320	



CODICE PART NR.	ENTRATA INLET	USCITA OUTLET	PRESSIONE MAX MAX PRESSURE		PORTATA FLOW	TEMP. MAX		SERIE POMPA PUMP SERIES	
			BAR	PSI		l/min	GPM		°C
84.5900.10.2 "professional"	3/8 BSP - F	1/4 BSP - F	280	4000	40	10,6	160	320	TM, TTL, TTK, KTL, KKL, RA, RB, RD
84.5900.13.2 "professional"	3/8NPT - F	1/4NPT - F	400	5800	30	8	160	320	

PISTOLE TIPO "B" - GUNS TYPE "B"
PISTOLETS TYPE "B" - PISTOLAS TIPO "B"

Con prolunga L=450mm
With extension L=450mm
Avec rallonge L=450mm
Con extensión L= 450mm



CODICE PART NR.	ENTRATA INLET	USCITA OUTLET	PRESSIONE MAX MAX PRESSURE		PORTATA FLOW	TEMP. MAX		SERIE POMPA PUMP SERIES	
			BAR	PSI		l/min	GPM		°C
84.6561.00.2	3/8 BSP - F	M22x1,5-F	200	2900	30	7,9	160	320	WB - WM
84.6562.00.2 "professional"	3/8 BSP - F	M22x1,5-F	280	4000	40	10,6	160	320	TM, TTL, TTK, KTL, KKL

LANCE SINGOLE - LANCES
LANCES SIMPLÉS - LANZAS SIMPLÉS

Con impugnatura fusa e testina porta ugello
With melted handle and nozzle head
 Avec poignée moulée et porte buses
 Con empuñadura fundida y portaboquilla



CODICE PART NR.	ENTRATA INLET	USCITA OUTLET	LUNGHEZZA LENGTH		PRESTAZIONI MAX Max performance		TEMP. MAX		APPLICAZIONI APPLICATIONS
			mm	Inch			°C	°F	
84.6591.00.2	1/4 BSP - M	1/4"NPT- F	700	28"	280 Bar 40 l/min	4000 PSI 10,6 GPM	160	320	Per pistole tipo A For gun type A
84.6592.00.2	1/4 BSP - M	1/4"NPT- F	900	36"	280 Bar 40 l/min	4000 PSI 10,6 GPM	160	320	Per pistole tipo A For gun type A
84.6593.00.2	1/4 BSP - M	1/4"NPT- F	1200	47"	280 Bar 40 l/min	4000 PSI 10,6 GPM	160	320	Per pistole tipo A For gun type A
84.6595.00.2	1/4NPT - M	1/4NPT- F	1041	41"	400 Bar 30 l/min	5800 PSI 8 GPM	160	320	Per pistole tipo A For gun type A

LANCE SINGOLE - LANCES
LANCES SIMPLÉS - LANZAS SIMPLÉS

Con attacco rapido e testina portaugello
With quick coupling and nozzle head
 Avec attache rapide et porte buses
 Con conexión rápida y portaboquilla



CODICE PART NR.	ENTRATA INLET	USCITA OUTLET	LUNGHEZZA LENGTH		PRESTAZIONI MAX Max performance		TEMP. MAX		APPLICAZIONI APPLICATIONS
			mm	Inch			°C	°F	
84.6575.00.2	M22x1,5-M	1/4"NPT- F	500	20"	280 Bar 40 l/min	4000 PSI 10,6 GPM	160	320	Per pistole tipo B For gun type B
84.6570.00.2	M22x1,5-M	1/4"NPT- F	700	28"	280 Bar 40 l/min	4000 PSI 10,6 GPM	160	320	Per pistole tipo B For gun type B
84.6580.00.2 "professional"	M22x1,5-M	1/4"NPT- F	700	28"	280 Bar 40 l/min	4000 PSI 10,6 GPM	160	320	Per pistole tipo B For gun type B
84.6590.00.2 "professional"	M22x1,5-M	1/4"NPT- F	900	36"	280 Bar 40 l/min	4000 PSI 10,6 GPM	160	320	Per pistole tipo B For gun type B

LANCE DOPPIE - DOUBLE LANCES
LANCES DOBLES - LANZAS DOBLES

Con attacco rapido e testina portaugello
With quick coupling and nozzle head
 Avec attache rapide et porte buses
 Con conexión rápida y portaboquilla



CODICE PART NR.	ENTRATA INLET	USCITA OUTLET	LUNGHEZZA LENGTH		PRESTAZIONI MAX Max performance		TEMP. MAX		APPLICAZIONI APPLICATIONS
			mm	Inch			°C	°F	
84.6604.10.2	M22x1,5-M	1/4"NPT- F	700	28"	280 Bar 40 l/min	4000 PSI 10,6 GPM	150	302	Per pistole tipo B For gun type B
84.6604.20.2 "professional"	M22x1,5-M	1/4"NPT- F	900	36"	280 Bar 40 l/min	4000 PSI 10,6 GPM	150	302	Per pistole tipo B For gun type B

CODICE PART NR.	DESCRIZIONE DESCRIPTION	ENTRATA INLET	USCITA OUTLET	SERIE POMPA PUMP SERIES	APPLICAZIONI APPLICATION
84.6650.00.2	Testina portaugello regolabile Adjustable nozzle Tête réglable Cabeza portaboquilla regulable	1/4 BSP - F	1/4 NPT- F	WB, WM, TM, TT, KT, KK	Tutte le lance All lances Toutes les lances Todas las lanzas
84.6647.00.2	Testina portaugello doppia Change over nozzle Buse à bille Cabeza portaboquilla doble	1/4 BSP - F	1/4 NPT- F	WB, WM, TM, TT, KT, KK	Tutte le lance All lances Toutes les lances Todas las lanzas
84.6648.50.2	Testina sabbiante Sand blasting head Tête de sablage Cabeza para arenar	1/4 BSP - F	Ugello Nozzle 1.4	WB, WM	Tutte le lance All lances Toutes les lances Todas las lanzas
84.6648.00.2 "professional"	Testina sabbiante Sand blasting head Tête de sablage Cabeza para arenar	1/4 BSP - F	Ugello Nozzle 1.5	WB, WM, TM, TT, KT, KK	Tutte le lance All lances Toutes les lances Todas las lanzas
84.6650.05.2	Testina schiumogena Foam injector Canon à mousse Cabeza espumadora	1/4 BSP - F	Con serbatoio With tank	WB, WM,	Tutte le lance All lances Toutes les lances Todas las lanzas
84.6567.00.2 "professional"	Testina schiumogena Foam injector Canon à mousse Cabeza espumadora	1/4 BSP - F	Con serbatoio With tank	WB, WM, TM, TT, KT, KK	Tutte le lance All lances Toutes les lances Todas las lanzas
84.6425.00	Spazzola rotante Rotating brush Brosse rotative Cepillo rotatorio	M22x1,5-M	Max press.: 30 Bar 435 Psi	WB, WM	Tutte le lance All lances Toutes les lances Todas las lanzas
84.6420.00.2 "professional"	Spazzola rotante Rotating brush Brosse rotative Cepillo rotatorio	M22x1,5-M	Max press.: 30 Bar 435 Psi	TM, TT, KT, KK	Tutte le lance All lances Toutes les lances Todas las lanzas

TUBI FLESSIBILI / HOSES / TUYAUX FLEXIBLES MANGUERAS FLEXIBLES

Tipo/ Type: SAE 100 5/16"

CODICE PART NR.	RACCORDO CONNECTION	TIPO TYPE	LUNGHEZZA LENGTH	PRESSIONE MAX MAX PRESSURE	SERIE POMPA PUMP SERIES
86.0805.00.2	2 x 3/8" F	R1	6 m	200 Bar 2900 Psi	WB, WM, TT, KK
86.0806.00.2	2 x 3/8" F	R1	10 m	200 Bar 2900 Psi	WB, WM, TT, KK
86.0808.00.2	2 x 3/8" F	R1	15 m	200 Bar 2900 Psi	WB, WM, TT, KK
86.0810.05.2	2 x 22x1.5 F	R1	10 m	200 Bar 2900 Psi	WB, WM, TT, KK
86.0807.00.2	2 x 3/8" F	R2	10 m	300 Bar 4350 Psi	KT, TT, RA

ATTACCHI / QUICK COUPLINGS
ATELAGES/ CONEXIONES

Attacchi rapidi - Screw quick couplings
 Raccords rapides - Conexiones rápidas



CODICE PART NR.	DESCRIZIONE DESCRIPTION	ENTRATA INLET	USCITA OUTLET	APPLICAZIONI APPLICATION
84.6650.30.2	Attacco rapido fisso Fixed Screw quick coupling	1/4 BSP - M	M22x1,5-F	Tutti gli accessori All accessories
84.6650.45.2	Attacco rapido fisso Fixed Screw quick coupling	1/4 BSP - F	M22x1,5-F	Tutti gli accessori All accessories
84.6650.25.2	Attacco rapido girevole Screw quick coupling	3/8 BSP - M	M22x1,5-F	Tutti gli accessori All accessories
84.6650.35.2	Attacco rapido girevole Screw quick coupling	3/8 BSP - F	M22x1,5-F	Tutti gli accessori All accessories
84.6650.26.2	Attacco rapido fisso Fixed Screw quick coupling	3/8 BSP - M	M22x1,5-F	Tutti gli accessori All accessories

EIETTORI / INJECTORS
EJECTEURS/ EYECTORES







Per valvole regolazione - For unloader valves
 Pour régulateurs de pression - Para válvulas de regulación de presión



CODICE PART NR.	DESCRIZIONE DESCRIPTION	UGELLO NOZZLE	ENTRATA INLET	USCITA OUTLET	PORTATA MAX MAX FLOW	SERIE POMPA PUMP SERIES
05.0137.00.2	Eiettore fisso Fixed injector	Ø2,3	3/8 BSP - F	M22x1,5-M	20 l/min 5.3 GPM	TM, TTL,TTK, KTL
05.0133.00.2	Eiettore fisso Fixed injector	Ø2,1	3/8 BSP - F	M22x1,5-M	15 l/min 4.0 GPM	WB, WM, TM
05.0150.00.2	Eiettore fisso Fixed injector	Ø1,8	3/8 BSP - F	M22x1,5-M	11 l/min 2.9 GPM	WB, WM
05.0153.00.2	Eiettore fisso Fixed injector	Ø2,3	3/8 BSP - F	3/8 BSP - M	20 l/min 5.3 GPM	TM, TTL,TTK, KTL
05.0152.00.2	Eiettore fisso Fixed injector	Ø2,1	3/8 BSP - F	3/8 BSP - M	15 l/min 4.0 GPM	WB, WM, TM
05.0151.00.2	Eiettore fisso Fixed injector	Ø1,8	3/8 BSP - F	3/8 BSP - M	11 l/min 2.9 GPM	WB, WM
05.8551.97.3	Eiettore regolabile Adjustable injector	Ø2,3	3/8 BSP - F	M22x1,5	20 l/min 5.3 GPM	TM, TTL,TTK, KTL
05.8552.97.3	Eiettore regolabile Adjustable injector	Ø2,1	3/8 BSP - F	M22x1,5	15 l/min 4.0 GPM	WB, WM, TM
05.8553.97.3	Eiettore regolabile Adjustable injector	Ø1,8	3/8 BSP - F	M22x1,5	11 l/min 2.9 GPM	WB, WM
05.8554.97.3	Eiettore regolabile Adjustable injector	Ø1,6	3/8 BSP - F	M22x1,5	10 l/min 2.6 GPM	WB, WM
05.8555.97.3	Eiettore regolabile Adjustable injector	Ø2,3	3/8 BSP - F	3/8 BSP - M	20 l/min 5.3 GPM	TM, TTL,TTK, KTL
05.8556.97.3	Eiettore regolabile Adjustable injector	Ø2,1	3/8 BSP - F	3/8 BSP - M	15 l/min 4.0 GPM	WB, WM, TM
05.8557.97.3	Eiettore regolabile Adjustable injector	Ø1,8	3/8 BSP - F	3/8 BSP - M	11 l/min 2.9 GPM	WB, WM
05.8558.97.3	Eiettore regolabile Adjustable injector	Ø1,6	3/8 BSP - F	3/8 BSP - M	10 l/min 2.6 GPM	WB, WM



RACCORDI VARI - FITTINGS - RACCORDS - EMPALMES

		CODICE PART NR.	FILETTO 1 SIZE 1	FILETTO 2 SIZE 2	MATERIALE MATERIAL
	NIPPLI MASCHIO-MASCHIO HEX NIPPLES	83.5019.00.2	M22x1,5-M	3/8 BSP - M	OTTONE - BRASS
		83.5004.60.2	1/4 BSP - M	M22x1,5-M	OTTONE - BRASS
		83.5016.50.2	3/8 BSP - M	3/8 BSP - M	ACCIAIO ZINCATO GALVANIZED STEEL
		83.5051.00.2	1/2 BSP - M	1/2 BSP - M	ACCIAIO ZINCATO GALVANIZED STEEL
		83.5036.00.2	1/2 BSP - M	3/8 BSP - M	ACCIAIO ZINCATO GALVANIZED STEEL
		83.5060.35.2	3/4 BSP - M	3/4 BSP - M	ACCIAIO ZINCATO GALVANIZED STEEL
		83.5062.30.2	3/4 BSP - M	1" BSP - M	ACCIAIO ZINCATO GALVANIZED STEEL
	RIDUZIONI MASCHIO-FEMMINA REDUCING BUSHING M-F	83.5017.00.2	M22x1,5-M	3/8 BSP - F	OTTONE - BRASS
		83.5069.51.2	M18x1,5-M	3/4 BSP - F	ACCIAIO ZINCATO GALVANIZED STEEL
		83.5019.50.2	M22x1,5-M	1/4 BSP - F	OTTONE - BRASS
		83.5029.00.2	1/4 BSP - M	3/4 BSP - F	ACCIAIO ZINCATO GALVANIZED STEEL
		83.5031.00.2	3/4 BSP - M	1" BSP - F	ACCIAIO ZINCATO GALVANIZED STEEL
		83.5097.00.2	1" BSP - M	3/4 BSP - F	ACCIAIO ZINCATO GALVANIZED STEEL
		83.5032.50.2	1"1/4 - M	3/4 BSP - F	ACCIAIO ZINCATO GALVANIZED STEEL
		83.5032.00.2	1"1/4 - M	1" BSP - F	ACCIAIO ZINCATO GALVANIZED STEEL
	MANICOTTI ADAPTERS	83.5074.00.2	1/4 BSP - F	1/4 BSP - F	ACCIAIO ZINCATO GALVANIZED STEEL
	RACCORDI A "T" TEE	83.5026.00.2	3/4 BSP - M		ACCIAIO ZINCATO GALVANIZED STEEL
		83.5073.00.2	1" BSP - M		ACCIAIO ZINCATO GALVANIZED STEEL
	CROCE CROSS 4 CONNECTS	83.5071.00.2	1" BSP - M		ACCIAIO ZINCATO GALVANIZED STEEL
	RACC. GIREVOLE SWIVEL	83.5060.40.2	3/4 BSP - M	3/4 BSP - F	ACCIAIO ZINCATO GALVANIZED STEEL
		83.5060.45.2	3/4 BSP - M 90°	3/4 BSP - F	ACCIAIO ZINCATO GALVANIZED STEEL

FILTRI IN ASPIRAZIONE / INLET FILTERS
FILTRES ASPIRATION / FILTROS EN ASPIRACIÓN



CODICE PART NR.	DESCRIZIONE DESCRIPTION	ENTRATA INLET	USCITA OUTLET	APPLICAZIONI APPLICATION
31.1054.97.3	Filtro aspirazione a "Y" 50mesh Y" intake strainer 50 mesh Filtre aspiration à "Y" 50mesh Filtro aspiración "Y" 50 mesh	1/2 BSP - F	1/2 BSP - F	Pompe con entrata 1/2 BSP Pumps with inlet. 1/2 BSP Pompes avec entrée 1/2 BSP Bombas con entrada 1/2 BSP
81.8610.00.2	Filtro aspirazione in plastica Plastic intake strainer Filtre plastique Filtro aspiración de plástico	1/2 BSP - F	1/2 BSP - M	Pompe con entrata 1/2 BSP Pumps with inlet. 1/2 BSP Pompes avec entrée 1/2 BSP Bombas con entrada 1/2 BSP
81.8620.00.2	Filtro aspirazione a "Y" 50mesh Y" intake strainer 50 mesh Filtre aspiration à "Y" 50mesh Filtro aspiración "Y" 50 mesh	3/4 BSP - F	3/4 BSP - F	Pompe con entrata 3/4 BSP Pumps with inlet. 3/4 BSP Pompes avec entrée 3/4 BSP Bombas con entrada 3/4 BSP
81.8630.00.2	Filtro aspirazione a "Y" 50mesh Y" intake strainer 50 mesh Filtre aspiration à "Y" 50mesh Filtro aspiración "Y" 50 mesh	1 BSP - F	1 BSP - F	Pompe con entrata 1" BSP Pumps with inlet. 1" BSP Pompes avec entrée 1" BSP Bombas con entrada 1" BSP
10.9826.97.3	Filtro aspirazione a detergente Chemical suction strainer Filtre aspiration détergent Filtro aspiración detergente	Portagomma Ø 7 Hose barb Ø 7 Arrivée d'eau Ø 7 Portaboquilla Ø 7		Per filtrare il detergente To filter detergent Pour filtrer le détergent Para filtrar el detergente

VALVOLE DI PROTEZIONE TERMICA / THERMO PROTECTOR VALVES
VALVES DE SÉCURITÉ THERMIQUE / VÁLVULAS DE PROTECCIÓN TÉRMICA



CODICE PART NR.	DESCRIZIONE DESCRIPTION	ENTRATA INLET	PORTAGOMMA HOSE BARB	PRESS. NOMINALE RATED PRESSURE	TEMPERATURA MAX MAX TEMPERATURE
86.1630.00.2	Thermo protector valve	1/2 BSP - M	Ø 7 mm	10 bar 145 Psi	63 °C 145 °F
86.1635.00.2	Thermo protector valve	3/8 BSP - M	Ø 7 mm	10 bar 145 Psi	63 °C 145 °F
86.1645.00.2	Thermo protector valve	1/2 BSP - M	Ø 7 mm	10 bar 145 Psi	56 °C 133 °F
86.1640.00.2	Thermo protector valve	3/8 BSP - M	Ø 7 mm	10 bar 145 Psi	56 °C 133 °F

KIT PULSE-JET / PULSE-JET KIT
KIT PULSE-JET / JUEGO DE CHORRO



CODICE PART NR.	POMPA PUMPS
06.9888.97.3	TM - TTL - TTK KTL - KKL - RA

VALVOLA DI RITARDO AVVIAMENTO / EASY STARTER
RETARDEUR DU DÉPART/ VÁLVULA DE RETRASO ARRANQUE



CODICE PART NR.	ATTACCO CONNECTION	PORTAGOMMA HOSE BARB	PRESS. NOMINALE RATED PRESSURE	PRESSIONE MAX MAX PRESSURE	PORTATA FLOW RATE	TEMP. NOM. RATED TEMP.
86.1650.00.2	3/8 BSP - M	8 mm	250 bar 3600 Psi	280 bar 4000 Psi	15 l/min 4 GPM	80 °C 175 °F

MANOMETRI / PRESSURE GAUGES - MANOMETRES / MANÓMETROS



CODICE PART NR.	DESCRIZIONE DESCRIPTION	ENTRATA INLET	SCALA SCALE
83.0096.20.2	DN 63 - ABS	1/4 BSP - M ATTACCO RADIALE	0 - 250 bar 0 - 3600 PSI
83.0096.50.2	DN 63 - INOX		0 - 250 bar 0 - 3600 PSI
83.0096.00.2	DN 63 - ABS		0 - 315 bar 0 - 4568 PSI
83.0097.00.2	DN 63 - INOX		0-600 bar 0-8700 PSI



CODICE PART NR.	DESCRIZIONE DESCRIPTION	ENTRATA INLET	SCALA SCALE
83.0096.25.2	DN 63 - ABS	1/4 BSP - M ATTACCO POSTERIORE	0 - 250 bar 0 - 3600 PSI
83.0096.05.2	DN 63 - ABS		0 - 315 bar 0 - 4568 PSI
83.0097.50.2	DN 63 - INOX	1/4 BSP - M BACK CONNECTION	0-600 bar 0-8700 PSI

TAPPO VALVOLA CON FORO PER MANOMETRO / VALVE CAP KIT WITH BORE FOR PRESSURE GAUGE
KIT BOUCHON CLAPET AVEC TROU POUR MANOMÈTRE / TAPA VÁLVULA CON AGUJERO PARA MANÓMETRO



CODICE PART NR.	USCITA OUTLET	ATTACCO POMPA PORT SIZE	SERIE POMPA PUMP SERIES
02.9838.97.3	1/4 BSP - F	M20x1	WJC-U
02.9811.97.3	1/4 BSP - F	M22x1	WB
05.9822.97.3	1/4 BSP - F	M24x1.5	W
05.9852.97.3	1/4 BSP - F	M24x1.5	TW - KWE
05.9853.97.3	1/4 BSP - F	M24x1.5	TW - KWE (NICHELATE-PLATED)
04.9889.97.3	1/4 BSP - F	M27x1.5	WM - TM - TTL - TTK - KTL - RAL
06.9870.97.3	1/4 BSP - F	M27x1.5	KTV (NICHELATE-PLATED)
08.9838.97.3	1/4 BSP - F	M27x1.5 (AISI 316)	RA
06.9868.97.3	1/4 BSP - F	M36x1.5	KKV - KKL - RB
06.9869.97.3	1/4 BSP - F	M36x1.5	KKV (NICHELATE-PLATED)