


Caratteristiche - Specifications		
IN	Ø	1"1/4 BSP
	PRESS. MIN.	-0.2 bar -3 PSI
	PRESS.MAX.	6 bar 87 PSI
	TEMP. MAX.	60° C 140° F
OUT	Ø	3/4 BSP
SHAFT	Ø	35 mm
OIL	SAE 75W90	2.8 Lt 0.74 U.S.G.
WEIGHT	Kg/Lbs	52/114.4
SEALS	Type	



Applicazioni: Soluzioni complete per la pulizia delle tubazioni p.112
Applications: Complete solutions for pipe and sewer cleaning p.112

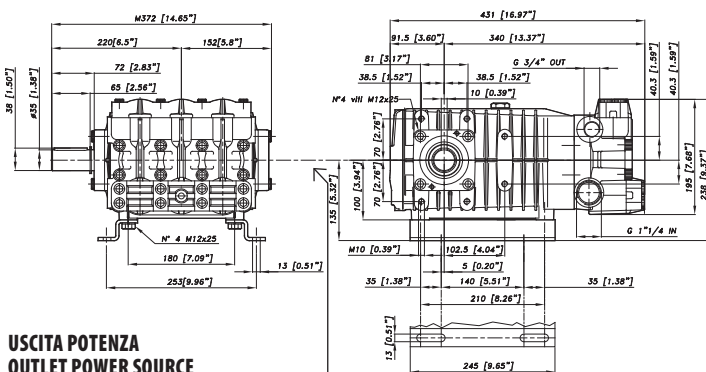
Codice Code	Modello Model	Press Max Max Pressure		RPM 550				RPM 750				RPM 1000				Pistone Plunger Dia. mm	Corsa Stroke mm
		bar	psi	L/min	GPM	kW	HP	L/min	GPM	kW	HP	L/min	GPM	kW	HP		
73.8500.97.A	CK 1426.1	100	1450	56	14,8	10,9	14,7	75	19,8	14,8	19,8	100	26,4	19,7	26,4	40	28
73.8501.97.A	CK 1433.1	100	1450	72	19,0	14,1	18,9	97	25,6	19,0	25,5	126	33,3	24,8	33,2	40	36
73.8502.97.A	CK 1440.1	100	1450	87	23,0	17,2	23,1	118	31,2	23,2	31,1	153	40,4	30,0	40,2	40	44

(*) Per specificare la versione aggiungere al codice:
R = albero destro dia.35 mm
L = albero speciale sinistro per applicazioni a motori idraulici (pompe CKI)

(*) To specify the version pls. add to the last number:
R = right side shaft dia.35 mm
L = special left side shaft for hydraulic motors applications (pumps CKI)

(*) Pour spécifier la version ajouter à la réf.:
R = arbre côté droit dia.35 mm
L = arbre côté gauche spécial pour accouplement aux moteurs hydrauliques (pompes CKI)

(*) Para especificar la versión añadir a la referencia:
R = cigüeñal a la derecha dia.35 mm
L = cigüeñal especial a la izquierda para aplicaciones con motores hidráulicos (bombas CKI)



USCITA POTENZA OUTLET POWER SOURCE

- Accoppiamento albero uscita supplementare, per azionamento accessori (es. pompe idrauliche, pompe centrifughe, ecc.)
- Extra shaft coupling to drive accessories (for ex. hydraulic pumps, centrifugal pumps, etc)
- Accouplement supplémentaire de l'arbre pour l'entraînement d'accessoires (par ex. pompes hydrauliques, pompes centrifuges, etc.)
- Acoplamiento eje a la salida adicional para accionar accesorios (por ejemplo bombas hidráulicas, bombas centrifugas, etc.)

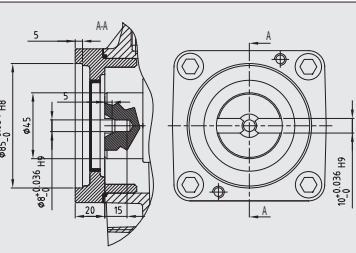


GRAFICO PRESTAZIONI - PERFORMANCE CHART

