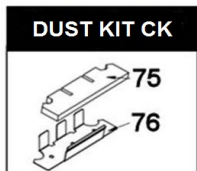
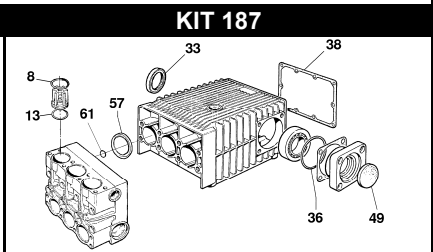
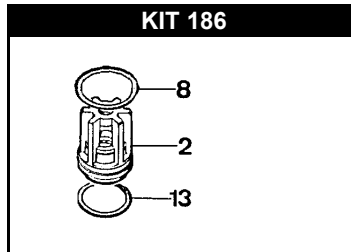
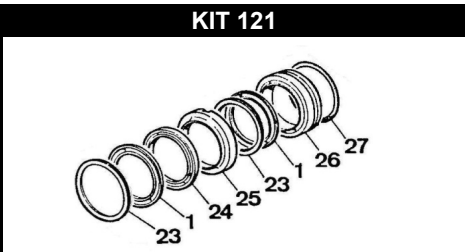
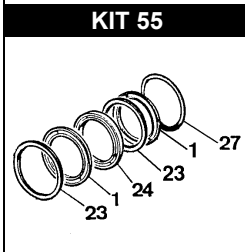
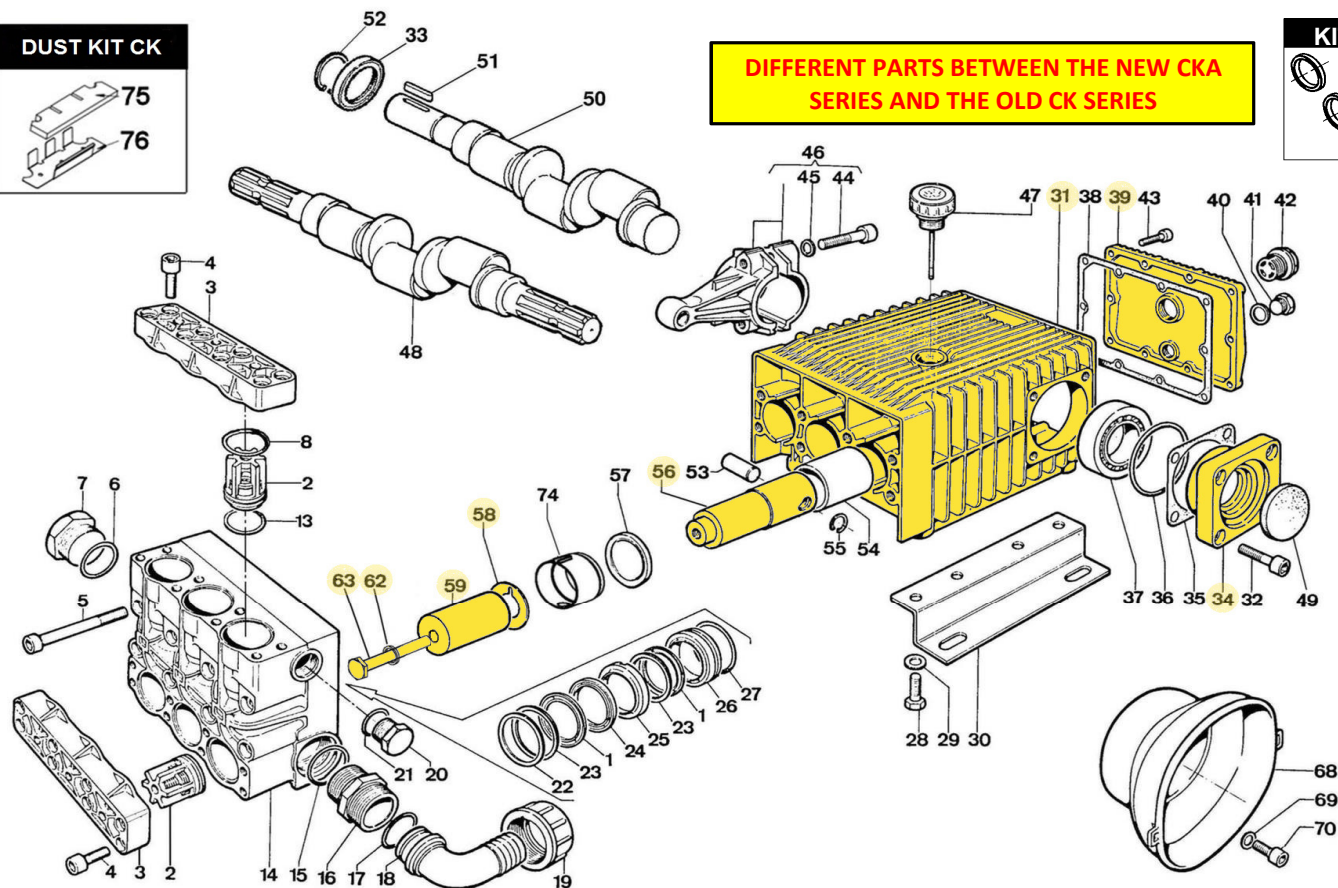
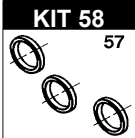


# CKA 73-110-120 P - CKA 73-90-110-115-120 PP



**DIFFERENT PARTS BETWEEN THE NEW CKA SERIES AND THE OLD CK SERIES**



POS.	CODICE PART NO. RÉF.	DENOMINAZIONE - DESCRIPTION - DESCRIPTION	Q.TY
1	KIT 359-360	802201002 V PACKING DIA. 45X60	6
2	KIT 186	739824973 VALVES ASSY	6
3		730416092 VALVES COVER	2
4		863910002 BOLT TCEI M12x40 UNI5931	16
5		864120002 BOLT TCEI M12x110 UNI5931	8
6		803265002 O-RING	1
7		852752002 CAP G. 1"1/2	1
8	KIT 186-187	803270002 O-RING 3,53x49,2	6
13	KIT 186-187	803253002 O-RING 3,53x34,52	6
14		730415092 PUMP HEAD	1
15		803265002 O-RING	1
16		835092502 NIPPLE G. 1"1/2-G. 1"3/4	1
17		803208502 O-RING 2,62x37,77	1
18		840595002 90° ELBOW CONNECTOR DIA.40 - 1,57"	1
19		820095002 WING NUT G. 1"3/4	1
20		852693532 CAP G. 3/4	1
21		803218002 O-RING 3x22	1
22		730039532 SPACER	3
23	KIT 55-121	730044322 THRUST RING	6
24	KIT 55-121	730040322 ANTI-EXTRUSION RING	3
25	KIT 121	730058532 FRONT GLAND 45x60	3
26	KIT 121	730070532 REAR GLAND 45x60	3
27	KIT 55-121	803283002 O-RING 3,53x58,74	3
28		863703002 BOLT M12X25 UNI5739	6
29		843844002 WASHER D. 13 UNI1751	6
30		730024612 MOUNTING RAIL	2
31		730506092 CRANKCASE	1
32		863996002 BOLT TCEI M12x25 UNI5931	8
33	KIT-187	802143002 OIL SEAL	2-1
34		730477092 BEARING COVER D.80	2
35/1		730413652 SHIM SP.0,1	1
35/2		730414652 SHIM SP.0,2	1
36	KIT-187	803210672 O-RING 2,62x88,57	2
37		812940002 BEARING 45X80X26	2
38	KIT-187	730065722 COVER GASKET	1
39		730475092 CRANKCASE COVER	1
40		824107002 GASKET D.16,5x23x1	1
41		852579532 CAP G. 3/8	1

POS.	CODICE PART NO. RÉF.	DENOMINAZIONE - DESCRIPTION - DESCRIPTION	Q.TY
42		853515502 OIL SIGHT GLASS WITH O-RING	1
43		862216002 BOLT TCEI M6x25 UNI5931	10
44		863439002 BOLT TCEI M10x45 UNI5931	6
45		843870002 SCHNORR WASHER D.10,5	6
46		739802972 CONROD	3
47		853516002 OIL PLUG + DIP STICK	1
48		730361262 ECCENTRIC CRANKSHAFT CKA 73 P	1
49		730366262 ECCENTRIC CRANKSHAFT CKA 110 P	1
49		730367262 ECCENTRIC CRANKSHAFT CKA 120 P	1
49	KIT-187	802099602 CAP D.52x7	1
50		730360262 ECCENTRIC CRANKSHAFT CKA 73 - 115 PP	1
50		730359262 ECCENTRIC CRANKSHAFT CKA 90 PP	1
50		730363262 ECCENTRIC CRANKSHAFT CKA 110 PP	1
50		730364262 ECCENTRIC CRANKSHAFT CKA 120 PP	1
51		806585002 TAB 10x8x55	1
52		801264002 SNAP RING D.35	1
53		852007402 PISTON PIN DIA. 18x35	3
54		804470002 BUSHING	3
55		800040002 SNAP RING D. 18	6
56		730485512 PISTON GUIDE	3
57	KIT 58-187	802180102 OIL SEAL	3
58		844212002 WASHER	3
59		730461182 CERAMIC PISTON D.45	3
62		843898002 COPPER WASHER D. 12X20X1,5	3
63		864091002 PISTON BOLT M12X100 UNI5737	3
68		311482322 PLAIN SAFETY CONE (OPTIONAL)	1
69		843710002 WASHER DIA.9X24X2 UNI 6593 (OPTIONAL)	2
70		862475002 BOLT M8X14 UNI 5931 (OPTIONAL)	2
74		730528322 OIL SEAL SPACER	3
75	DUST KIT	730531722 DUST SHEET	1
76	DUST KIT	730531612 DUST FILTER	1
REPAIR KIT	ITEM NO.s INCLUDED		RCS.
KIT 55	739841973	SPARE PARTS KIT	18
KIT 58	739842973	SPARE PARTS KIT	3
KIT 121	739846973	SPARE PARTS KIT	27
KIT 186	739871973	SPARE PARTS KIT	18
KIT 187	731028973	SPARE PARTS KIT	24
DUST KIT CK	730531973	SPARE PARTS KIT	2

